



Public Safety Fact Sheet

Facilitator: Barry Loeb, Vice President, General Council of Homeowner Associations of Port Washington

Relevant Governmental Entities:

Nassau County Police Department, Sixth Precinct
Town of North Hempstead
Village of Baxter Estates
Village of Flower Hill
Village of Manorhaven
Village of Plandome Manor
Village of Port Washington North
Village of Sands Point
Port Washington Police Department
Sands Point Police Department
Port Washington Fire Department

Reports Reviewed

Port Washington Police District Annual Report 1997 - 2003

Individuals Interviewed

Port Washington Fire Department
Port Washington Police Department Board of Commissioners
Sands Point Police Department
Inspector Peter Matuza, Nassau County Police Sixth Precinct
Hon. Jennifer Wilson-Pines, Deputy Mayor, Manorhaven.
Hon. Bob Weitzner, Deputy Mayor, Port Washington North.
David Wasserman, Commissioner of Department of Planning and Buildings, Town of North Hempstead

Public Safety / Code Enforcement

Public safety addresses code enforcement, crime prevention, and fire prevention and protection.

- There are **three police departments** serving the Port Washington Peninsula:
 1. Port Washington Police District.
 2. Sands Point Police Department.
 3. Nassau County Police Sixth Precinct.
- The **Port Washington Fire Department** serves the entire Port Washington Peninsula.



-
- The **Town of North Hempstead** is responsible for **code enforcement** within unincorporated Port Washington
 - Each **village** is responsible for **code enforcement** within its jurisdiction

Code Enforcement

- While the three police departments serving the Port Washington Peninsula are responsible for maintaining law and order, the local governments must **ensure that local building and property maintenance laws are followed.**
- While code enforcement is often associated with illegal housing, **it can also relate to:**
 - Property maintenance
 - Zoning violations.
 - Non-conforming signs
 - Building code violations
- Each **village** is responsible for **code enforcement** within its jurisdiction.
 - The **Village of Manorhaven** has a full time Superintendent of Buildings and a full time Code Enforcer. Tickets for code violations, ranging from improper trash disposal to building code violations are heard at the village court.¹ **Parking violations** are the greatest code violation in Manorhaven.²
 - The **Village of Port Washington North** has a part-time code enforcement officer. The greatest code violation in Port Washington North is **illegal parking.**³
- **Town of North Hempstead** is responsible for code enforcement within the unincorporated portion of the Peninsula.
 - The Town **Public Safety Department** is responsible for code enforcement of quality of life issues including property maintenance, unregistered vehicles, graffiti, and illegal parking.
 - The **Building Department** is responsible for enforcing building codes relating to illegal housing, zoning violations, and non-conforming signs on the building, and eligibility to rent an apartment.
 - The **majority** of the 214 complaints to the Town Building Department in 2004 were for **possible illegal apartments.** Between March and December 2004, 72 appearance tickets were issued for building code violations by the Town.⁴

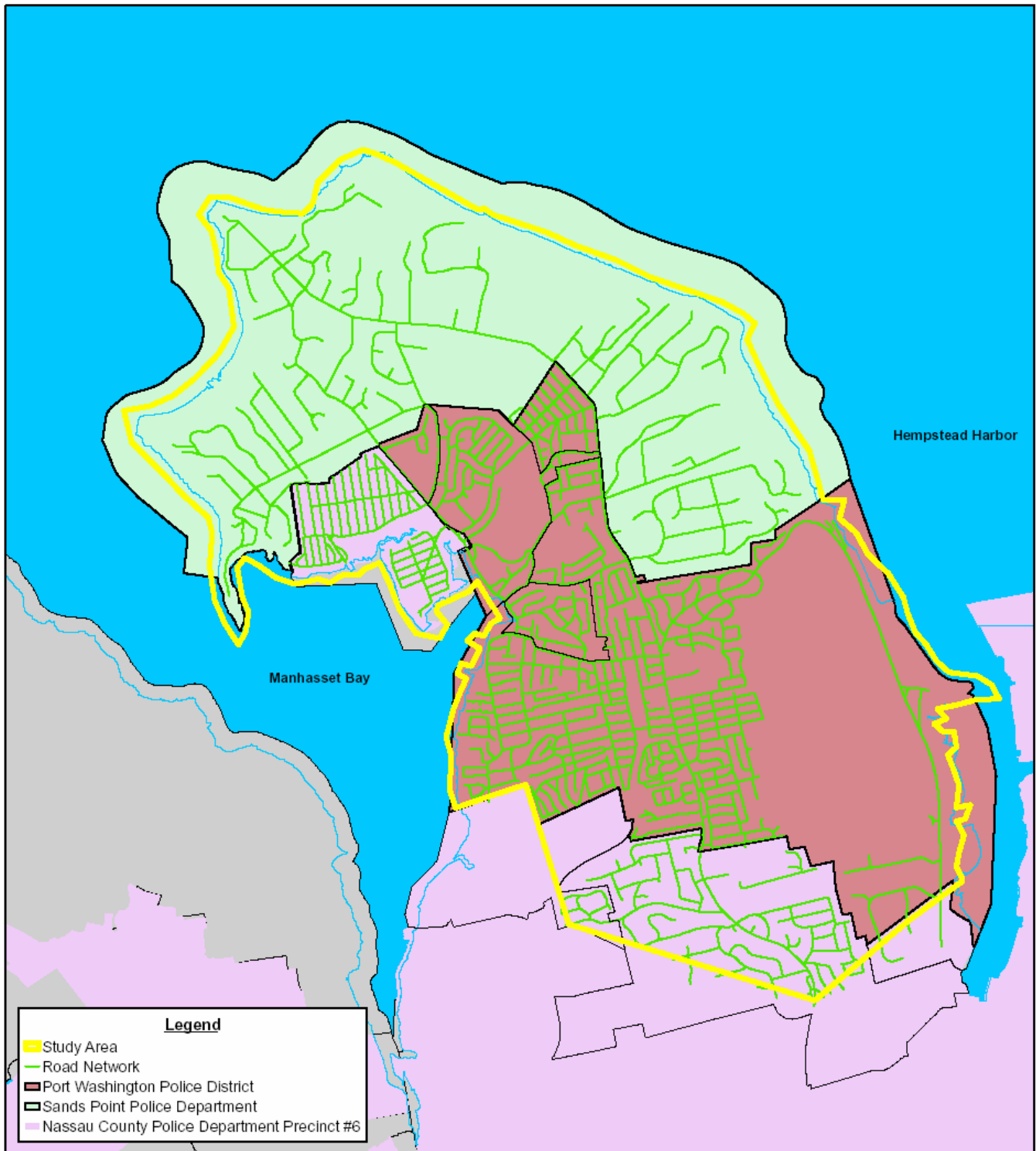
¹ Hon. Jennifer Wilson-Pines, Deputy Mayor, Manorhaven. Personal Interview. February 2005.

² Ronnie Shatzkaner, Clerk, Manorhaven. February 22, 2005.

³ Hon. Bob Weitzner, Deputy Mayor, Personal Interview. Port Washington North. January 25, 2005.

⁴ David Wasserman, Commissioner of Department of Planning and Buildings, Town of North Hempstead, Personal Interview, February 2005.

Police Districts



March 2005

Port Washington Peninsula



Public Safety

- There are three police departments serving the residents of Port Washington: **Sands Point Police Department, Port Washington Police District and the Nassau County Police Precinct #6 (Sixth Precinct).**
- Recently, there has been **increased gang activity** on the Port Washington Peninsula.
 - The Port Washington Police Department recently created a Gang Unit.
 - In the fall of 2004, the Sixth Precinct created a task force to address the problem with gangs.
 - Sands Point recently created a Gang Unit to share information with other agencies.⁵
 - In 2004, many of the arrests made in Manorhaven were likely gang-related and often associated with high congregation areas, like the Town-owned Manorhaven Park.⁶
 - Inspector Peter Matuza, commanding officer of the Sixth Precinct has authorized overtime to reduce gang activity.⁷
- The Port Washington Fire Department and the three police departments on the Port Washington Peninsula have had discussions about creating a **Disaster Management Plan** for the peninsula, but have not yet finalized a plan.
 - A **Disaster Management Plan** would designate a central command center with a system for contacting one another to **coordinate** evacuation or provision of needed services to the peninsula.
 - Currently, in the event of a fire or medical emergency in Sands Point, **the Sands Point Police Department must call the Nassau County Central Station for Fire Communications (Central Station) in Mineola to notify the Port Washington Fire Department.** The Central Station then contacts the Port Washington Fire Department.
 - The Port Washington Police Department and the Sands Point Police Department do have **open communications in the patrol cars.**⁸

⁵ Lieutenant Mark Mandel, Sands Point Police Department. February 2005.

⁶ O'Brien, Dolores Kazanjian. "Concerned Citizens of Manorhaven Discuss Crime with NCPD." Port Washington News, November 19, 2004.

⁷ ibid

⁸ Sands Point Police Department. Personal Interview. January, 2005.

Sands Point Police Department

- There are 21 members of the **Sands Point Police Department** (SPPD) including the Chief of Police, one Lieutenant, four Sergeants and fifteen police officers.
- The **main focus of the SPPD is patrol**, but it also provides traffic enforcement, a school resource officer and juvenile aid.⁹
- The SPPD added a **School Resource Officer** and a **Juvenile Aid Officer** in 2004. Prior to 2004, the SPPD relied on the PWUFSD for a School Resource Office and the Nassau County Police Department for Juvenile Aid.
- The SPPD does not have a detective division so it conducts its own preliminary investigations but relies on the Nassau County Police Department for detectives when they are needed.¹⁰
- SPPD also has a **Crime Prevention Officer** and a **Gang Unit** consisting of one Sergeant and two Police Officers who share information with specialized units of other police agencies.
- In 2004, there were more than **2,400 calls for service** including:
 - Criminal investigations.
 - Family offenses.
 - Aided cases.¹¹
 - Traffic accidents and investigations.
 - Suspicious circumstances.
 - Traffic/parking complaints.
 - Fire investigations.
 - Burglar alarms.
 - Public disorders.
- Without any major commercial areas, the **majority of arrests** are for vehicle and traffic law violations.¹² Motor Vehicle Accidents have steadily decreased due to aggressive selective traffic enforcement.
- Crimes against property have also progressively **decreased** due to increased proactive patrol methods.¹³
- In 1990, the SPPD implemented a **computerized record management** system in their office, and hope to begin to install the system into the patrol vehicles.
- The majority of the SPPD's **annual budget** of \$2.7 million is spent on salaries, so capital improvements are made as the money is available.
- **The SPPD's priorities** include continued training of the officers and adding more first line supervisors.¹⁴

⁹ Sands Point Police Department Website www.geocities.com/sandspointpd/Department_page.html.

¹⁰ Sands Point Police Department, Personal Interview, January, 2005.

¹¹ An *aided case* is a call to provide emergency medical assistance to save lives and aid the injured and sick.

¹² Lieutenant Mark Mandel, Sands Point Police Department. February 2005.

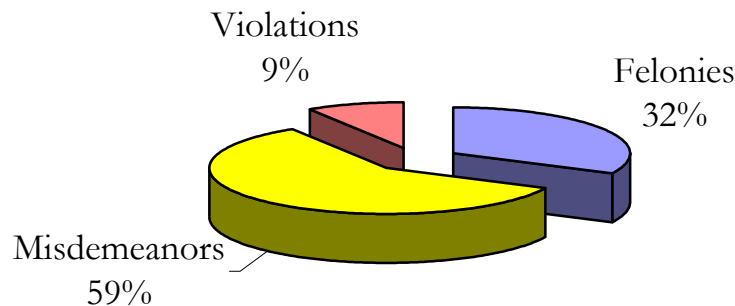
¹³ Sands Point Police Department, Personal Interview January, 2005.

¹⁴ *ibid*

Port Washington Police District

- The Port Washington Police District (PWPD) serves the residents of **unincorporated Port Washington, Baxter Estates, and Port Washington North.**
- The Port Washington Police Department has a **Board of Police Commissioners** which is elected by the residents in the District. **Other staff include:**
 - A Chief of Police, Assistant to the Chief of Police, Deputy Chief of Patrol, Commanding Officer - Detective Division, seven lieutenants, one detective sergeant, six sergeants, eight detectives, 39 police officers, and 18 other members who handle traffic control, parking meters, school crossings, and maintenance.¹⁵
- The PWPD has **11 special assignment areas:** Chamber of Commerce/Community Liaison, Detective Division/Juvenile Aid Bureau Gang Unit/Narcotics Unit, and School Liaison/Resource Officer, Records and Administration, Data Processing Unit, Procurement and Supply, Training Bureau, Traffic Enforcement Unit, Fleet Maintenance, Firearms Training Unit, and Crime Prevention (Bicycle-Community Patrol).¹⁶

Figure 1: Port Washington Police Districts Arrests - 2003



- In 2003, there were **11,691 reported incidents.**¹⁷
 - The number of reported incidents has **increased 23 percent** since 1997.¹⁸
 - **Over 60 percent** of reported incidents were received between 7 a.m. and 7 p.m.
 - The largest number of incidents, 22 percent, was for **alarms.**
 - 19 percent of reported incidents were **calls for service.**
 - The **other types of reported incidents** included vehicle accidents, fire/hazard/hazmat, aided cases, family problems, parking conditions, property lost/found or public order incidents.
- The PWPD made **214 arrests** with 544 total charges in 2003.
 - The number of **arrests** made by the PWPD has **decreased 15 percent since 1997** based on increase police presence and direct patrol.

¹⁵ Port Washington Police District Annual Report 2003.

¹⁶ ibid

¹⁷ ibid

¹⁸ Port Washington Police District Annual Reports 1997 and 2003.

- The number of **narcotics arrests** has **decreased over 50 percent**.¹⁹
- The majority of arrests were for **misdemeanors** such as assault, aggravated unlicensed operation and driving while intoxicated.
- Over one-third of arrests were **felonies** such as criminal possession of a forged instrument and criminal possession of a controlled substance.
- Arrests for **violations** were primarily for driving while ability impaired.
- The **Detective Division** made 61 arrests including felonies and misdemeanors.
- There were 10 arrests by the **Narcotics Unit** including felonies and misdemeanors.²⁰

¹⁹ Port Washington Police District Annual Report 2003

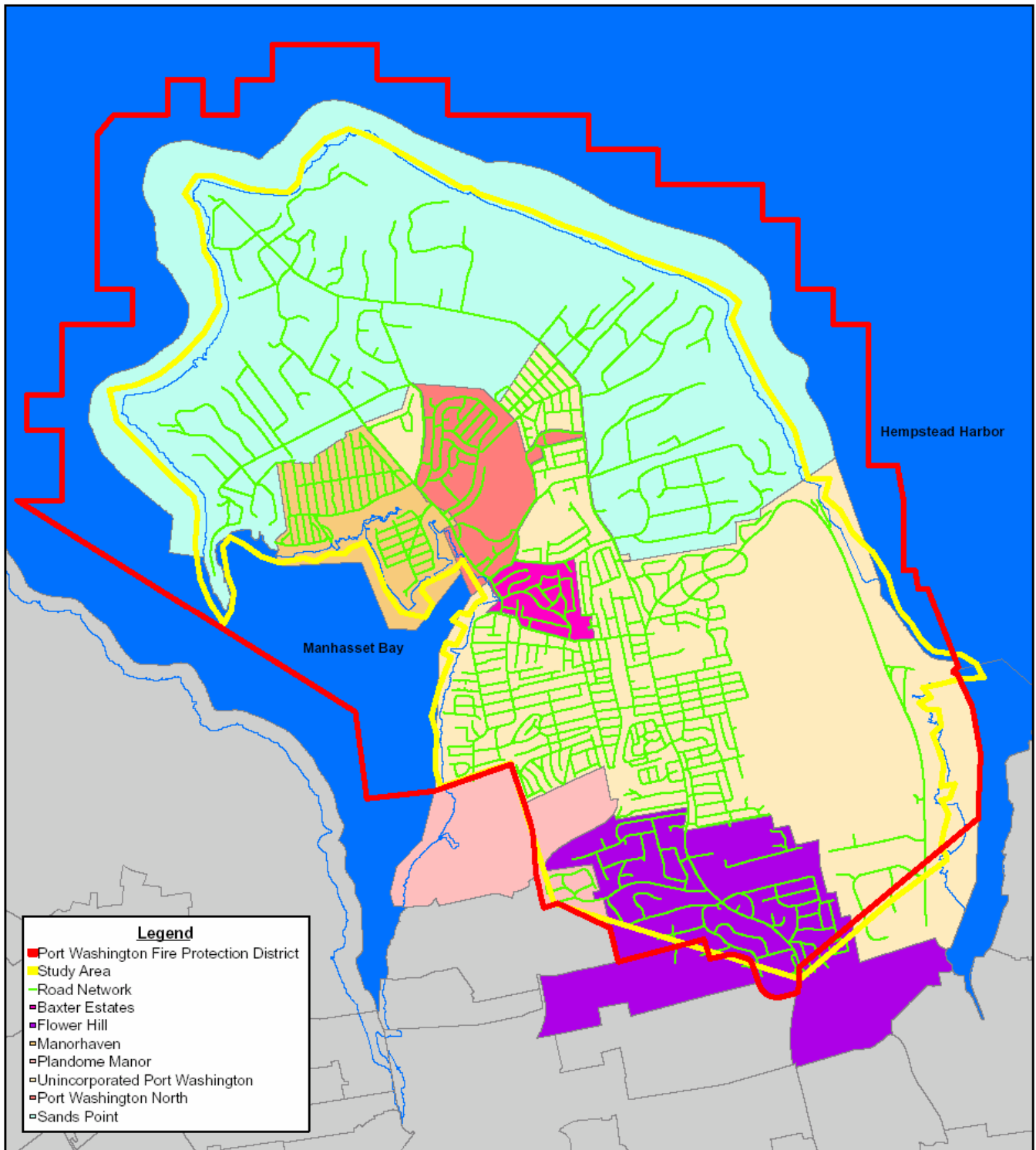
²⁰ *ibid*

Nassau County Police Precinct #6

- The Sixth Precinct, Nassau County Police (Sixth Precinct) serves over 200,000 residents in **Manorhaven, Flower Hill and Plandome Manor** on the Port Washington Peninsula and over 15 other communities in Great Neck, Manhasset, and Glen Cove.
- **Administrative Staffing** includes a Commanding Officer, a Deputy Commanding Officer and an Administrative Lieutenant.
- **Twenty-four sector cars** patrol the Precinct. The officers assigned to these units work either 7 a.m. to 7 p.m. or 7 pm to 7 a.m.
- There are currently **129 officers** assigned to the patrol function.
 - There are five Problem Oriented Police Officers, two traffic enforcement officers and one specialized enforcement officer.
- Additionally, **the Sixth Squad**, which is resident in the Sixth Precinct, has a commanding officer, three sergeants and sixteen detectives assigned to investigate major crime occurrences.
- The Sixth Precinct has available to it **Department-wide specialized units** such as the Emergency Services Unit, the Highway Patrol, the Bureau of Special Operations, the Narcotics Bureau, the Emergency Ambulance Bureau, the Juvenile Aid Bureau, and the Crime Scene Search Unit.
- In 2004, the Sixth Precinct responded to 50,494 calls for service, **a 7 percent decrease** in the number of calls for service from 2003.
- The Sixth Precinct has enjoyed an overall major **crime reduction** of **approximately 20 percent** over the past two years. This includes reductions in felony assaults, robberies, burglaries, stolen vehicles and grand larcenies.
- A key component of this reduction has been the implementation of **Nass-Stat**, a clone of the New York City Police Department's CompStat reporting process.
 - This system designated the Commanding Officer and administrative staff of the command **accountable** for addressing crime and quality of life issues within the command to the entire command staff of the Nassau County Police Department.
 - Commanders are required to formally present their **crime reduction strategies** on a monthly basis, which include topics such as the status of crime, local quality of life issues, traffic situations and innovative programs.
- The Sixth Precinct began a **community outreach program** approximately two years ago instructing residents on various topics such as personal safety and burglary prevention.
- Approximately two years ago, the Sixth Precinct re-instituted the Department's **Park, Walk and Talk Program** that allows the sector car operators to leave their vehicles and patrol, by foot in downtown business areas. This is significant because it puts the officers in direct contact with residents, shoppers, and businessmen.
- The **Village of Manorhaven** is patrolled around the clock by Radio Motor Patrol Vehicle 604. This unit is staffed during the day tour by one officer and on the night tour by two officers.
 - In 2003, the Sixth Precinct responded to 2,397 calls for service in the village. In 2004 there were 2,506 calls.
 - In 2003, there were five occurrences of residence burglary and five of business burglary. In 2004 there were four reports of residence burglary and nine reports of business burglary.

- There were no robberies in 2003 and one report in 2004 in which there was an arrest.
- There were 21 arrests during 2003 and 40 in 2004 ranging from burglaries to minor violations.
- The **Village of Flower Hill** is patrolled by Vehicle 610
 - The Sixth Precinct responded to 3,583 calls for service in 2003 in the Village of Flower Hill. In 2004 the Sixth Precinct serviced 3,790 calls for service.
 - There were four residence burglary reports in 2003 and eight reports in 2004. There was one business burglary report in 2003 and none reported in the year 2004.
 - There were no robberies reported in 2003, however there was one report in 2004.
 - There were 31 arrests during 2003 and fourteen during 2004.
- The **Village of Plandome Manor** is patrolled by Vehicle 607
 - There were 1418 calls for service in the Village of Plandome Manor for the year 2003, and 1294 in 2004.
 - There was no major crime reported in the Village of Plandome Manor for both 2003 and 2004.
 - There were three arrests in this village in 2003 and 2 in 2004.

Port Washington Fire Protection District



<p>March 2005</p>	<p>Port Washington Peninsula</p>	
-------------------	----------------------------------	---

Fire Protection

- The Port Washington Fire Department (PWFD) is a **non-profit corporation that provides contractual** fire protection and emergency medical services (EMS) to the Port Washington Fire Protection District.
- **Port Washington Fire Protection District** includes:
 - Unincorporated Port Washington
 - Baxter Estates.
 - Portions of Flower Hill.
 - Manorhaven.
 - Portions of Plandome Manor.
 - Port Washington North.
 - Sands Point.
- The PWFD is a **volunteer fire department** with over 280 active members, seven fire houses located around the Port Washington Peninsula and over 30 pieces of fire apparatus and support equipment.²¹
- There are **four companies** within the PWFD which are responsible for various aspects of fire and EMS services. The companies are:²²



Atlantic Hook
and Ladder Co.1



Protection Engine
Company No.1



Flower Hill Hose
Company No. 1



Fire Medic
Company No. 1

- The PWFD has a Chief of the Department, 1st Assistant Chief, and 2nd Assistant Chief who are elected by the members of the four companies.
 - The **three chiefs manage the day-to-day operations** of the PWFD and report to an **Administrative Board of Directors who manage the financial decisions.**
- The PWFD 2004 budget of \$2.83 million **decreased 6 percent** from 2003 budget.
- In 2003, the PWFD responded to **1,075 fire calls** and **1,412 EMS** calls. Since 1983:
 - The number of **EMS calls has increased 49 percent.**²³
 - The number of **fire calls has increased 132 percent.**²⁴
 - The number of active PWFD **members has decreased 28.5 percent.**²⁵

²¹ John Walters, III, Port Washington Fire Department, March 11, 2005.

²² Port Washington Fire Department website www.pwfd.org

²³ ibid

²⁴ ibid

²⁵ John Walters, III, Port Washington Fire Department, March 11, 2005.

- The Port Washington Peninsula has a **Fire Protection District** and not a Fire District:²⁶
 - A Fire Protection District offers **more authority internally to the members of the Fire Department**, with no legal authority regarding development decisions.
 - The PWFD is able to make decisions about services, staffing, and equipment based on their needs **without outside influence**.
 - The PWFD strives to **work with developers** on the Port Washington Peninsula to ensure that all appropriate fire protection measures are included.
 - However, the PWFD, may not be made aware of development in the planning stages and as such it is more difficult for them to ensure **development meets local fire and building codes** including sprinklers, clearly marked exits, or adequate water main capacity beneath the development.
 - Without a Fire Inspector in the District, the PWFD has been **volunteering time** to observe new construction.
 - The PWFD has been **monitoring new construction** in the District to ensure that the buildings contain the appropriate fire protection measures.
- There is no legal requirement to bring the PWFD into the early stages of development negotiations.
 - Any capital changes that the PWFD must make to accommodate a new development are not negotiated ahead of time; therefore the PWFD and Port Washington residents often **bear the capital costs**. For example, equipment to accommodate development is not always known because the legal transaction documents have already been finalized often before the PWFD is aware of the planned development. As a result, **Port Washington Peninsula taxpayers** have paid for the new equipment through their taxes.
- As more senior housing units have been created on the Port Washington Peninsula, the PWFD has noticed an **increase of EMS calls**. For example, the Addison House, which was a vacant sand pit prior to development, has called the PWFD 30 times in 2004.²⁷

²⁶ Port Washington Fire Department, Personal Interview, December 10, 2004

²⁷ ibid